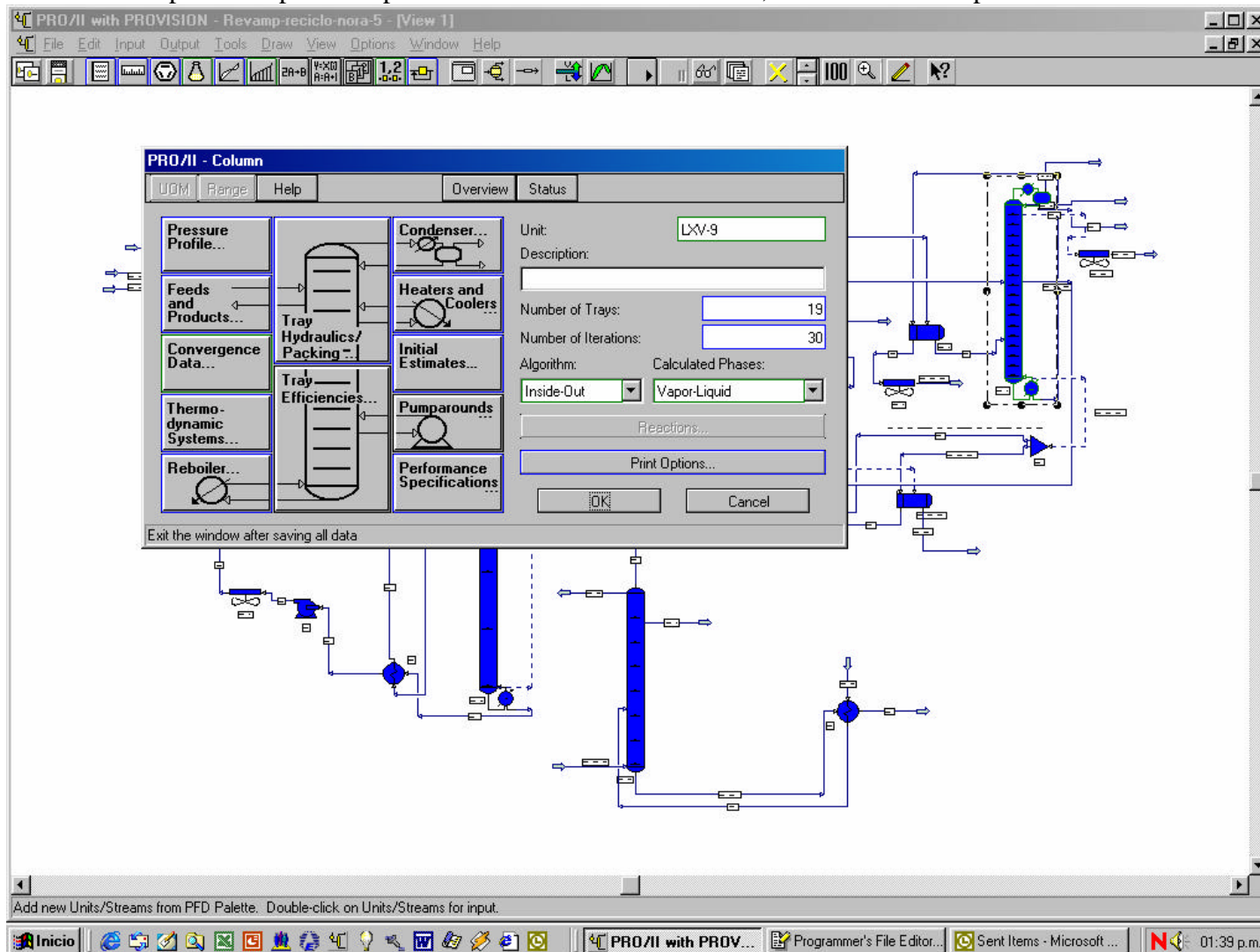


Parámetros importantes para completar una columna de destilación, en simulación de procesos.



Es imprescindible completar el perfil de presiones de la columna.

PRO/II with PROVISION - Revamp-reciclo-nora-5 - [View 1]

File Edit Input Output Tools Draw View Options Window Help

PRO/II - Column

UDM Range Help Overview Status

Pressure Profile... Condenser... Unit: LXV-9 Description:

Column - Pressure Profile

UDM Define Range Help Overview

Pressure Specification Mode

- ☐ Overall
- ☒ By Individual Trays

Overall Specification

Top Tray Pressure: KG/CM2

Pressure Drop

- ☒ Per Tray: 0.00000 KG/CM2
- ☐ Column: 0.00000 KG/CM2

Individual Tray Specification

Cut	Tray	Pressure KG/CM2
Copy	1	1.1000
Paste	2	2.0000
Insert	19	2.5000
Reset	4	
	5	

OK Cancel

Exit the window after saving all data

Add new Units/Streams from PFD Palette. Double-click on Units/Streams for input.

Inicio | [Icons] | PRO/II with ... | Programmer's Fi... | Sent Items - Mi... | Documento1 - ... | 01:40 p.m.

PRO/II with PROVISION - Revamp-reciclo-nora-5 - [View 1]

File Edit Input Output Tools Draw View Options Window Help

Column - Feeds and Products

UDM Define Range Help Overview

Feed	Tray
KERO-V	9
S4	15

Feed Flash Convention

☒ Vapor and liquid to be on the feed tray.

☐ Flash the feed adiabatically, vapor onto the tray above and liquid onto the feed tray.

Product	Type of Product	Phase	Tray	Rate	
G-V11	Overhead	Vapor	1		KG-MOL/HR
NAFTA	Fixed Rate Draw	Liquid	1	18.000	M3/HR
KERO-L	Fixed Rate Draw	Liquid	9	42.792	M3/HR
AGUA	Total Phase Draw	Water	1		KG-MOL/HR
FDO-A-LX-V28	Bottoms	Liquid	19	95.000	M3/HR

Pseudoproducts...

OK Cancel

Exit the window after saving all data

Add new Units/Streams from PFD Palette. Double-click on Units/Streams for input.

Inicio

PRO/II with ...

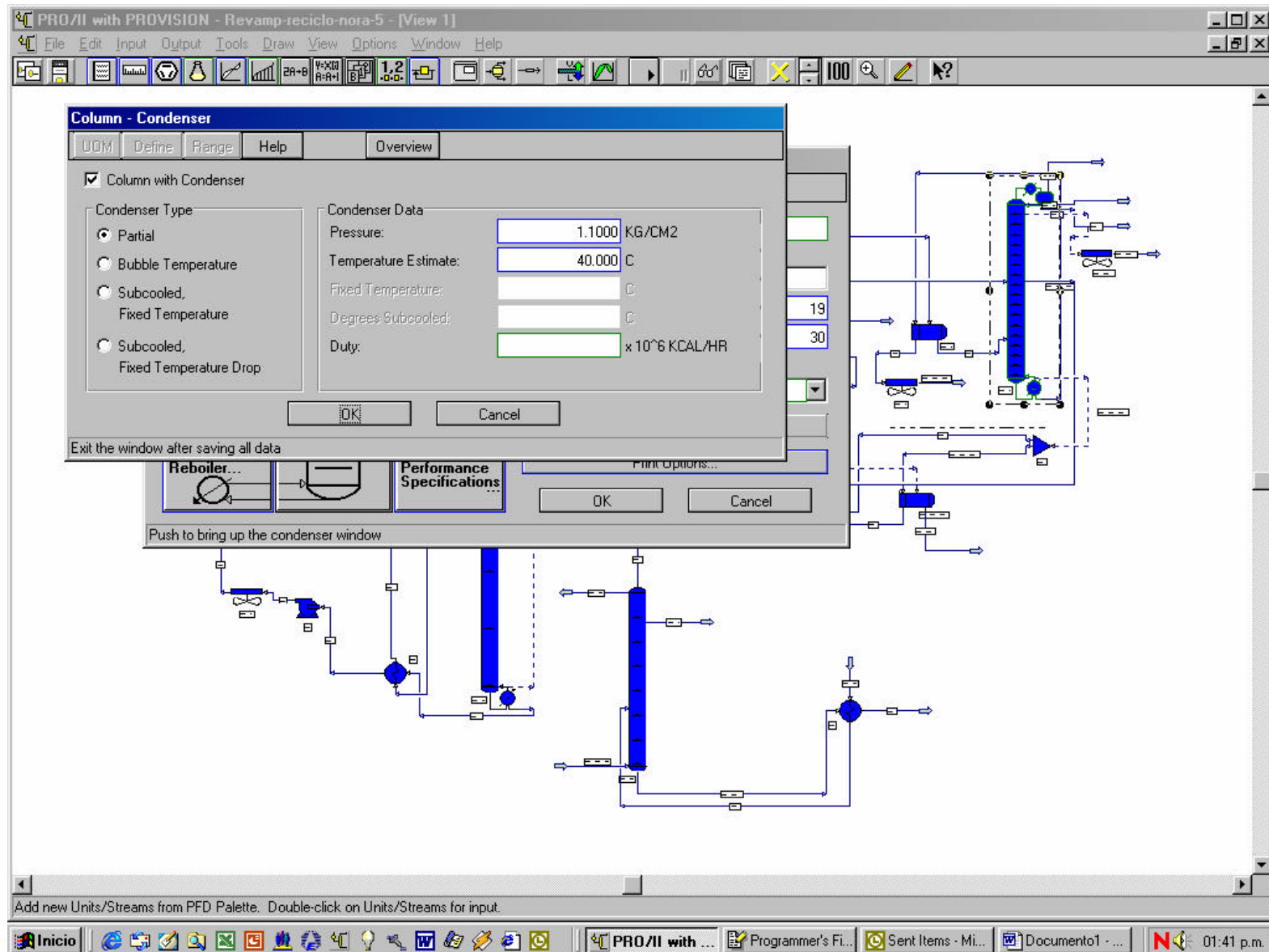
Programmer's Fi...

Sent Items - Mi...

Documento1 - ...

01:41 p.m.

Es imprescindible fijar los platos de alimentación y productos. También los estimados de algunos productos.



PRO/II with PROVISION - Revamp-reciclo-nora-5 - [View 1]

File Edit Insert Process Tools Process Specs Database Windows Help

**Column - Reboiler**

UCM Define Range Help Overview

☒ Column with Reboiler

Reboiler Type

- ☐ Kettle (Conventional)
- ☐ Thermosiphon without Baffles
- ☒ Thermosiphon with Baffles

Thermosiphon Reboiler Specification

- ☐ Return Liquid:  Mole Fraction
- ☐ Return Vapor:  Mole Fraction
- ☐ Temperature:  C
- ☐ Temperature Change:  C
- ☒ Rate:  M3/HR

Molar Estimate

- ☐ Return Vapor:  Mole Fraction
- ☐ Rate:  KG+MOL/HR

Duty:   $\times 10^6$  KCAL/HR

OK Cancel

Exit the window after saving all data

ion: LXV-9

of Trays:

of Iterations:

Calculated Phases:

Reactions...

Print Options...

OK Cancel

Add new Units/Streams from PFD Palette. Double-click on Units/Streams for input.

Inicio | [Icons] | PRO/II with ... | Programmer's Fi... | Sent Items - Mi... | Documento1 - ... | 01:41 p.m.



PRO/II with PROVISION - Revamp-reciclo-nora-5 - [View 1]

File Edit Input Output Tools Draw View Options Window Help

Column - Specifications and Variables

UDM Range Help Overview

☒ Add Specifications and Variables

Specifications:

- 1 COL2SPEC1 - Column LXV-9 Reflux Rate in M3/HR = 54.000 within the default tolerance
- 2 COL2SPEC2 - Column LXV-9 Tray 1 Temperature in C = 40.000 within the default tolerance
- 3 COL2SPEC3 - Stream NAFTA Flowrate of All Components on a Wet basis in M3/HR = 18.000 within the default tolerance

Variables:

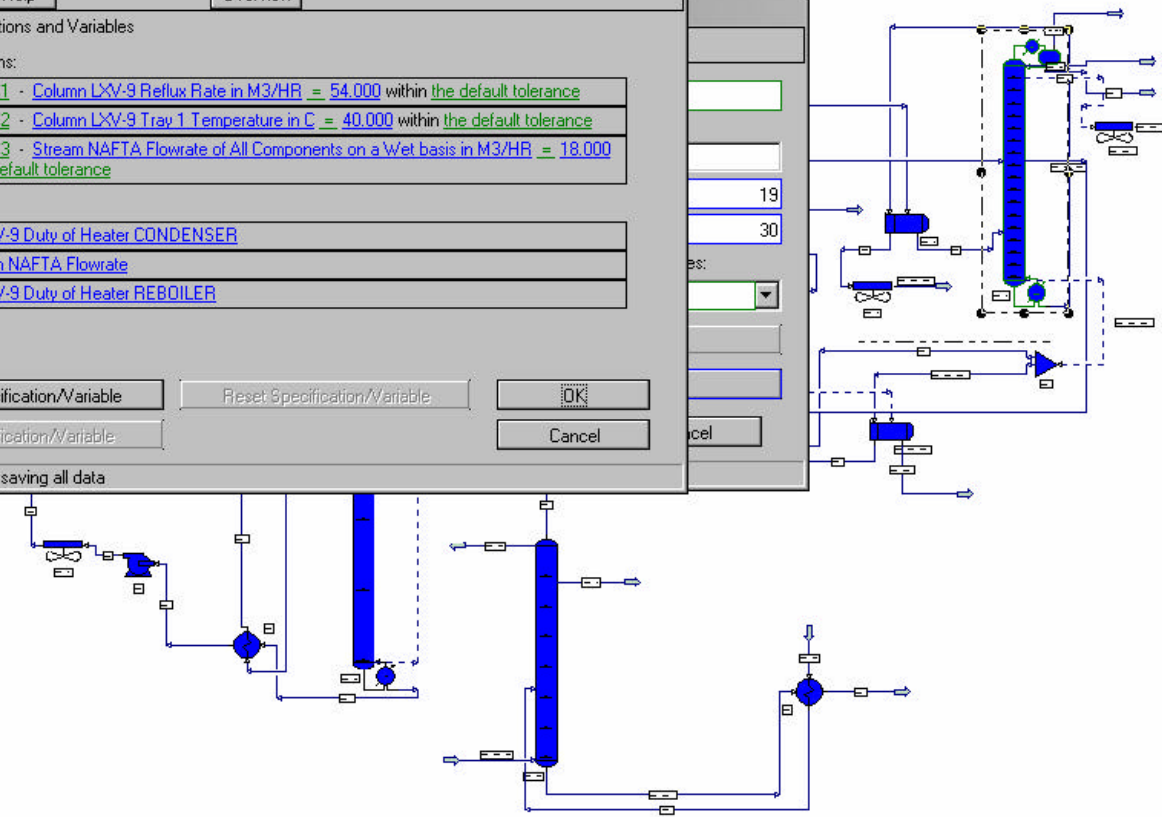
- 1 Column LXV-9 Duty of Heater CONDENSER
- 2 Vary Stream NAFTA Flowrate
- 3 Column LXV-9 Duty of Heater REBOILER

Insert Specification/Variable Reset Specification/Variable OK

Exit the window after saving all data

Cancel

Add new Units/Streams from PFD Palette. Double-click on Units/Streams for input.



Inicio

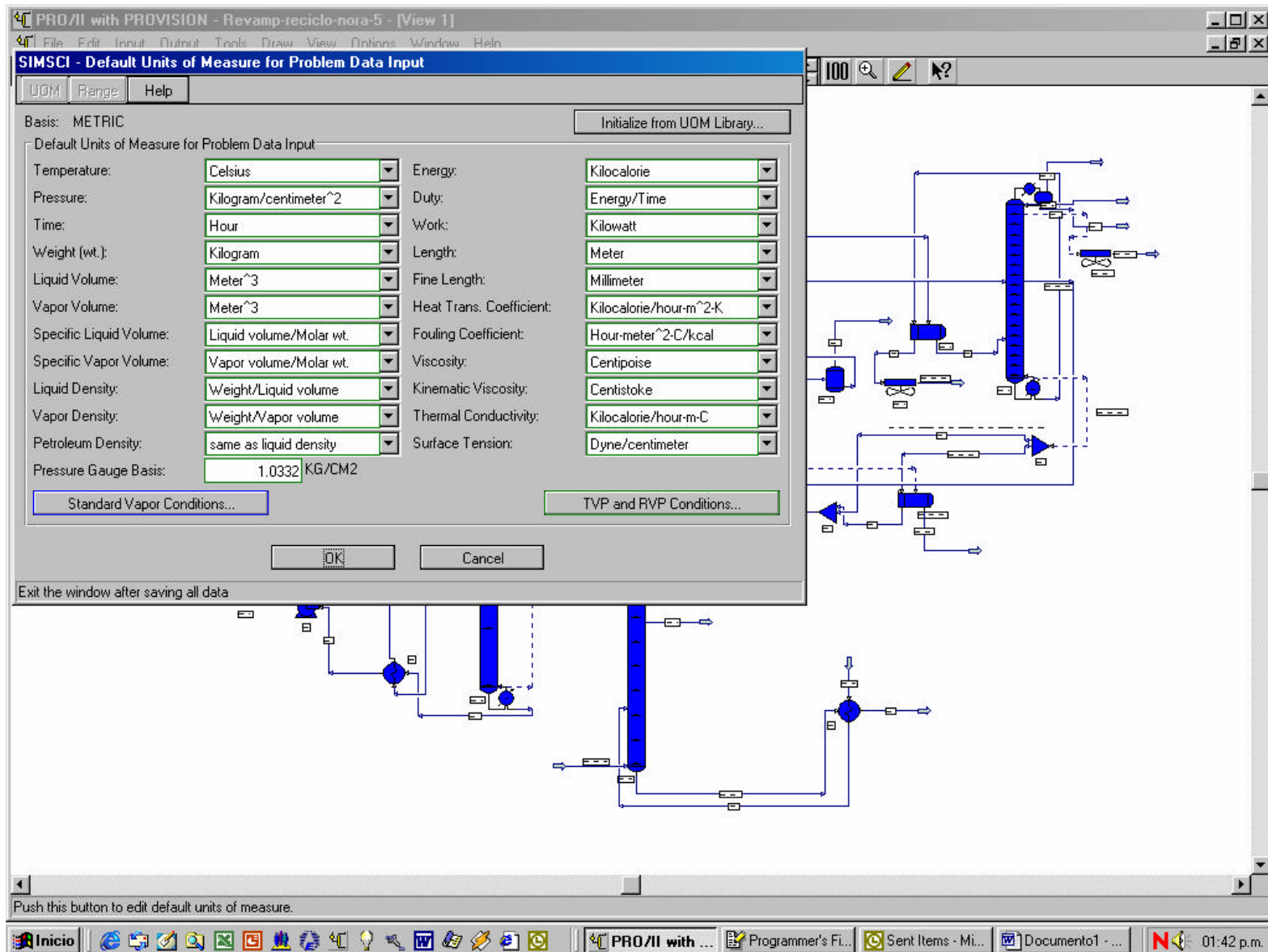
PRO/II with ...

Programmer's Fi...

Sent Items - Mi...

Documento1 - ...

01:41 p.m.



PRO/II with PROVISION - Revamp-reciclo-nora-5 - [View 1]

File Edit Input Output Tools Draw View Options Window Help

**SIMSCI - Thermodynamic Data**

UDM Range Help Overview Status

Selection of Property Calculation System:

Category: Most Commonly Used  
All Primary Methods  
Equations of State  
Liquid Activity  
Generalized Correlations  
Special Packages  
Electrolyte

Primary Method: Soave-Redlich-Kwong  
Peng-Robinson  
Grayson-Streed  
Braun K10  
Ideal  
NRTL  
UNIQUAC

Defined Systems: GS01  
SRK01  
BK1001  
GS02

Default System: GS01

Actions for Selected Property Calculation System:  
Modify... Delete Rename...

OK Cancel

Select a thermodynamic system category

Push this button to edit thermodynamic data.

The diagram shows a complex process flow involving two distillation columns. The left column has a reboiler at the bottom and a condenser at the top. The right column is taller and also has a reboiler and condenser. Various streams of liquid and vapor are shown flowing between the columns, pumps, and heat exchangers. The entire process is contained within a rectangular frame with a title bar and menu bar.

Inicio

PRO/II with ... Programmer's Fi... Sent Items - Mi... Documento1 - ... 01:43 p.m.